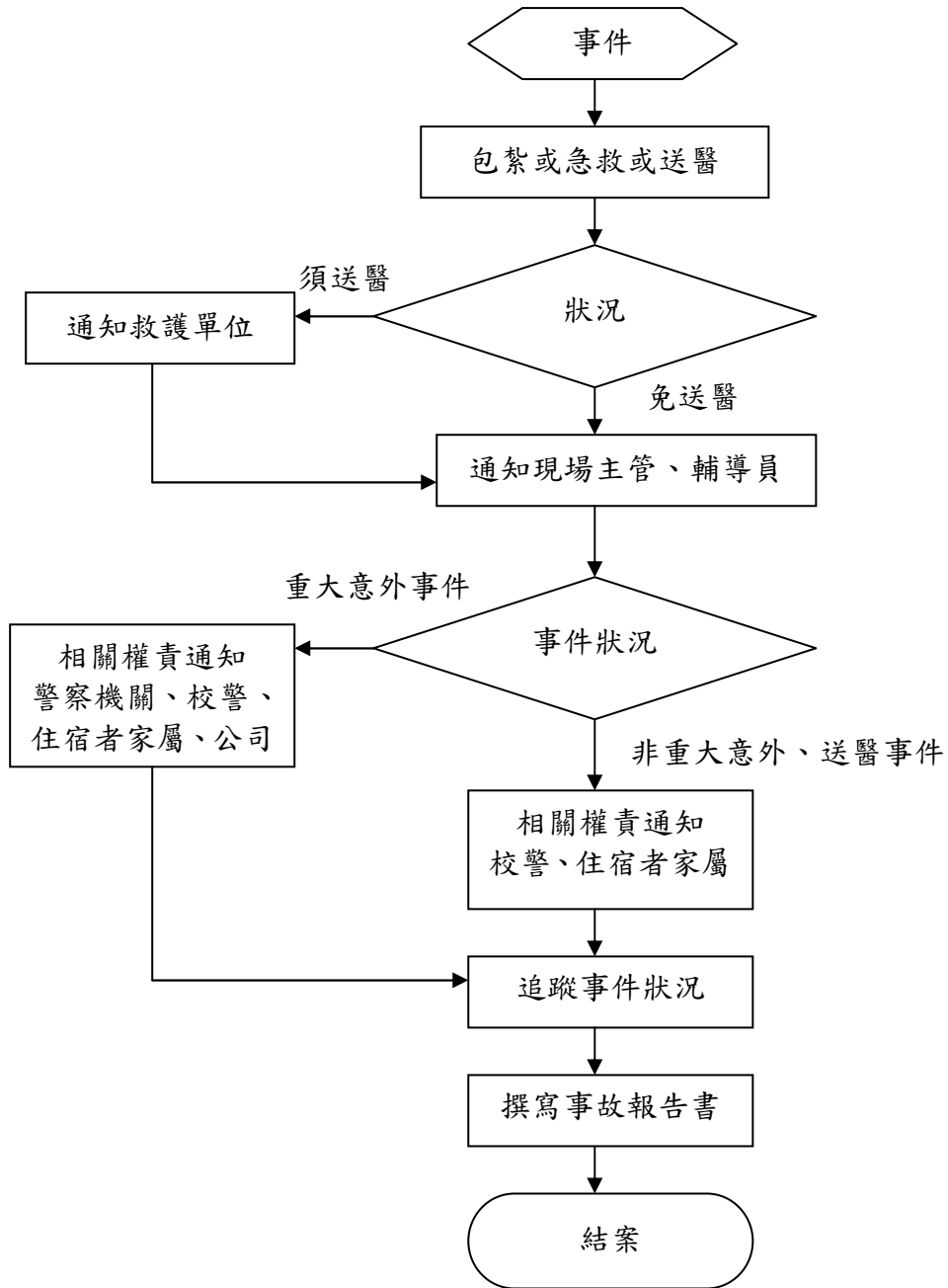
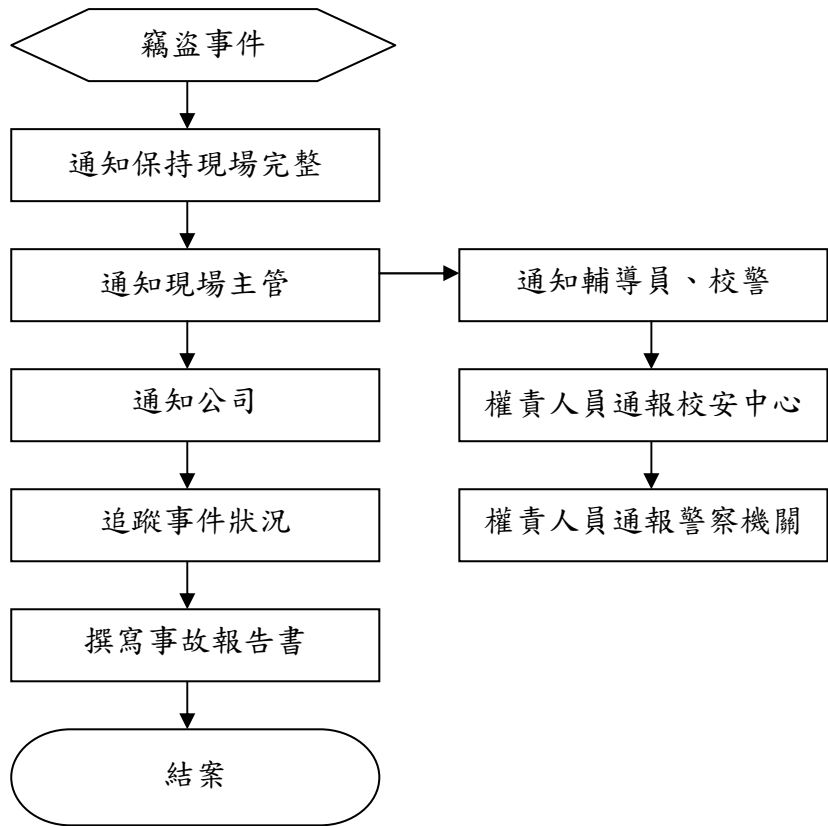


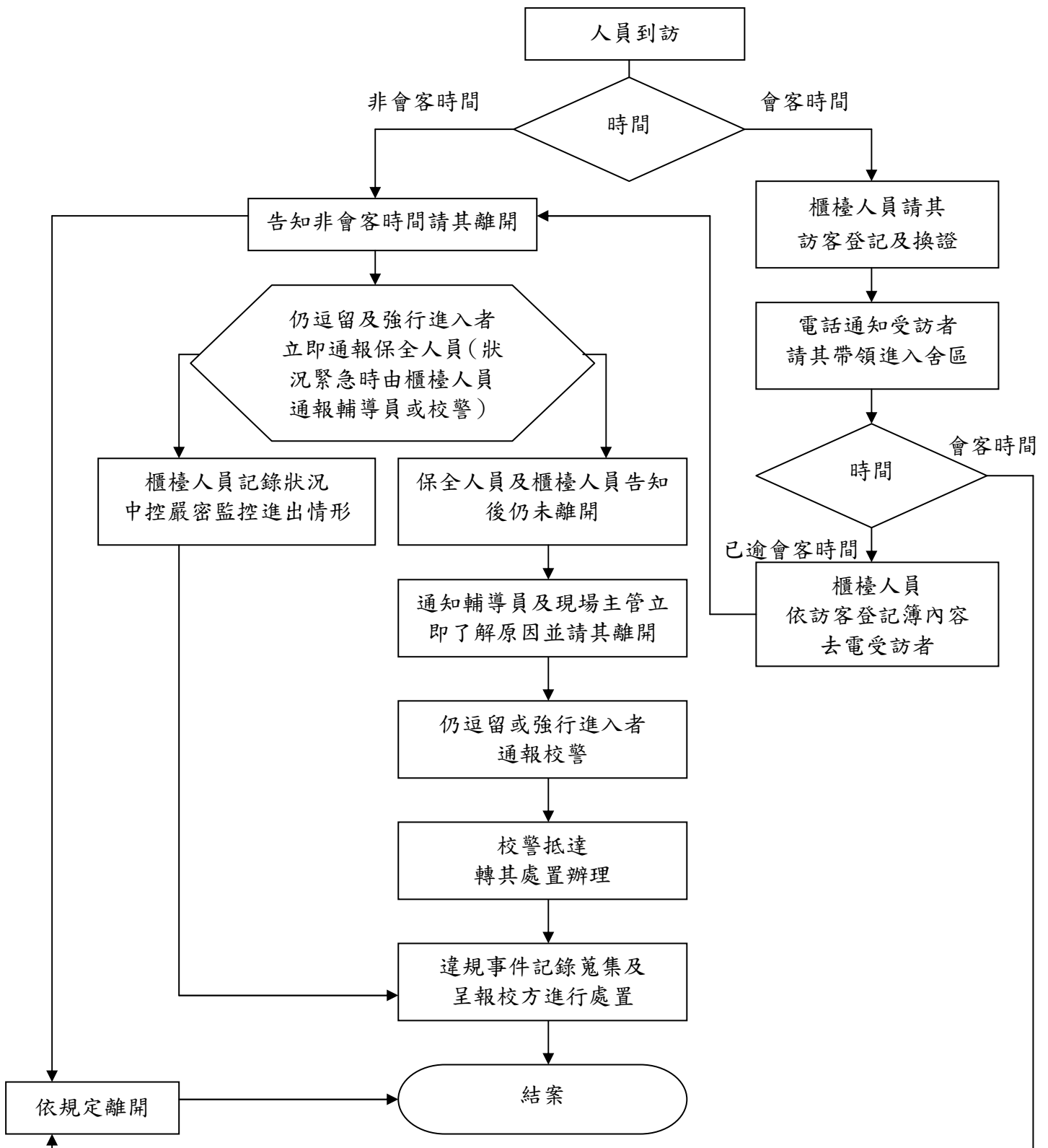
壹、緊急送醫事件處理



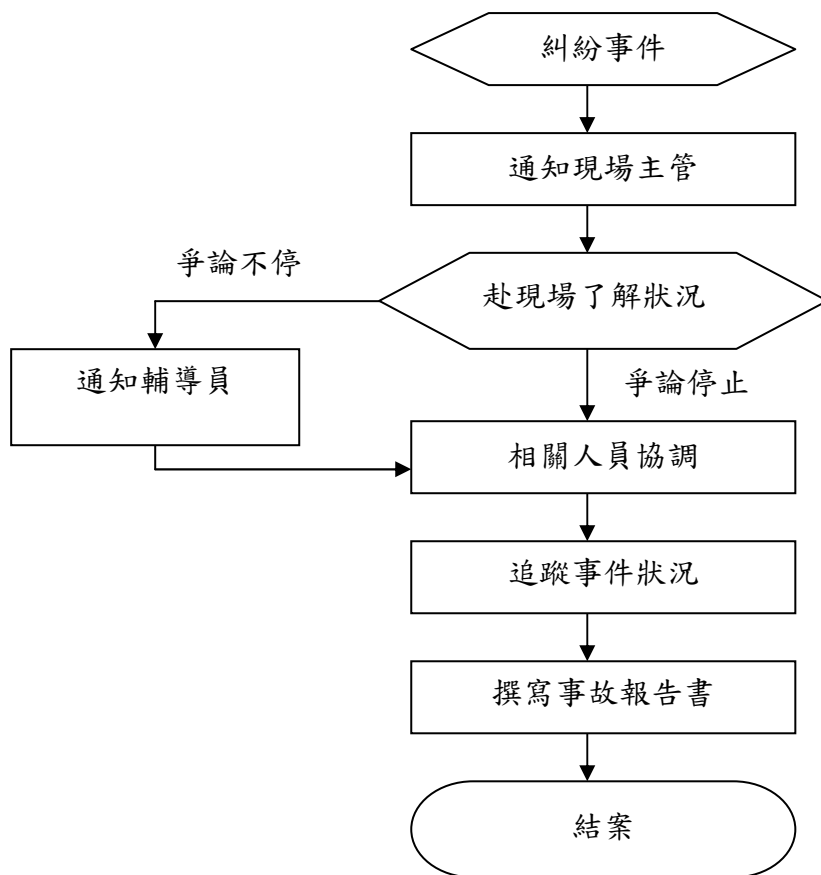
貳、竊盜事故處理



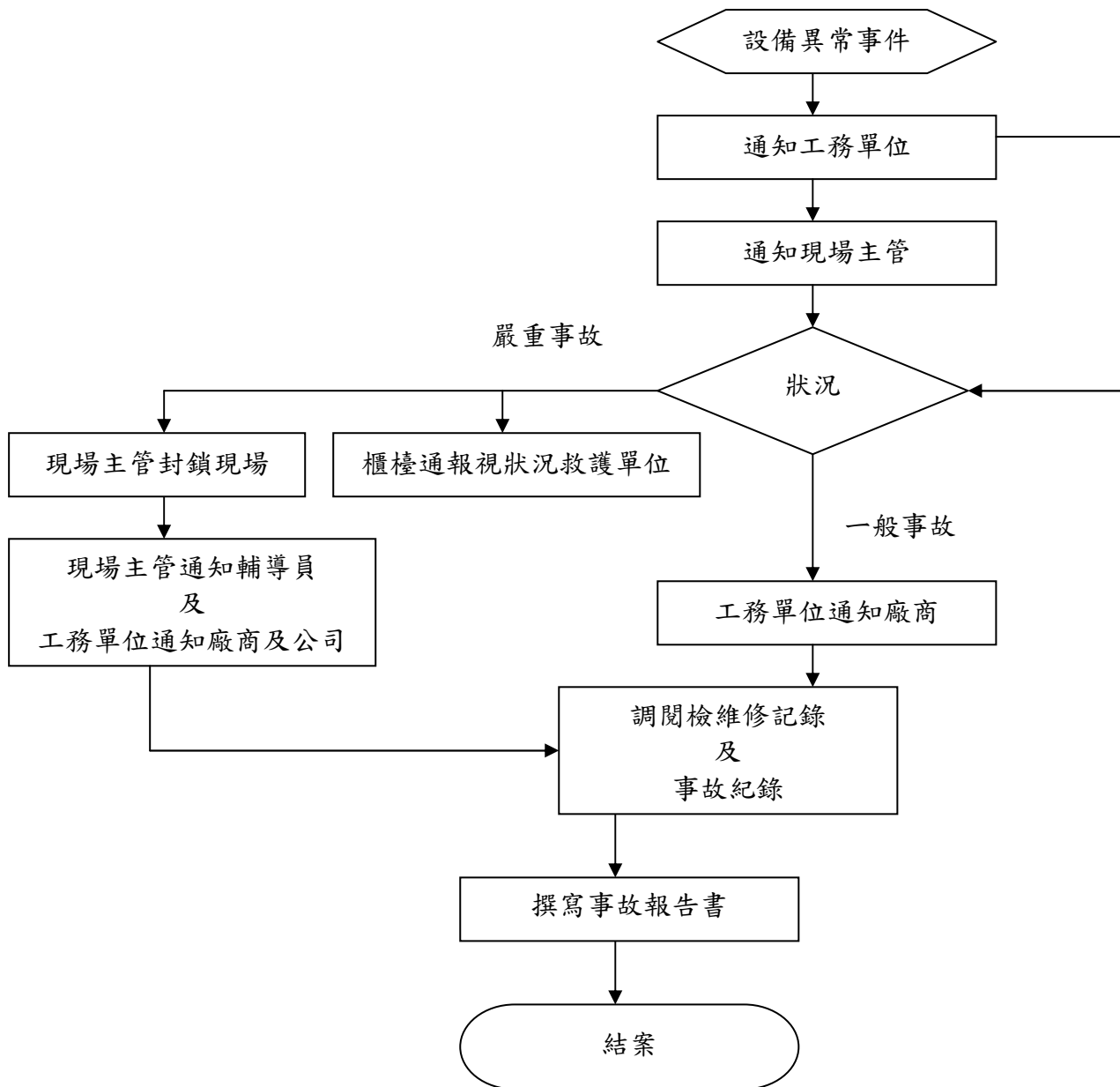
參、未依訪客規定之處理



肆、住宿糾紛處理

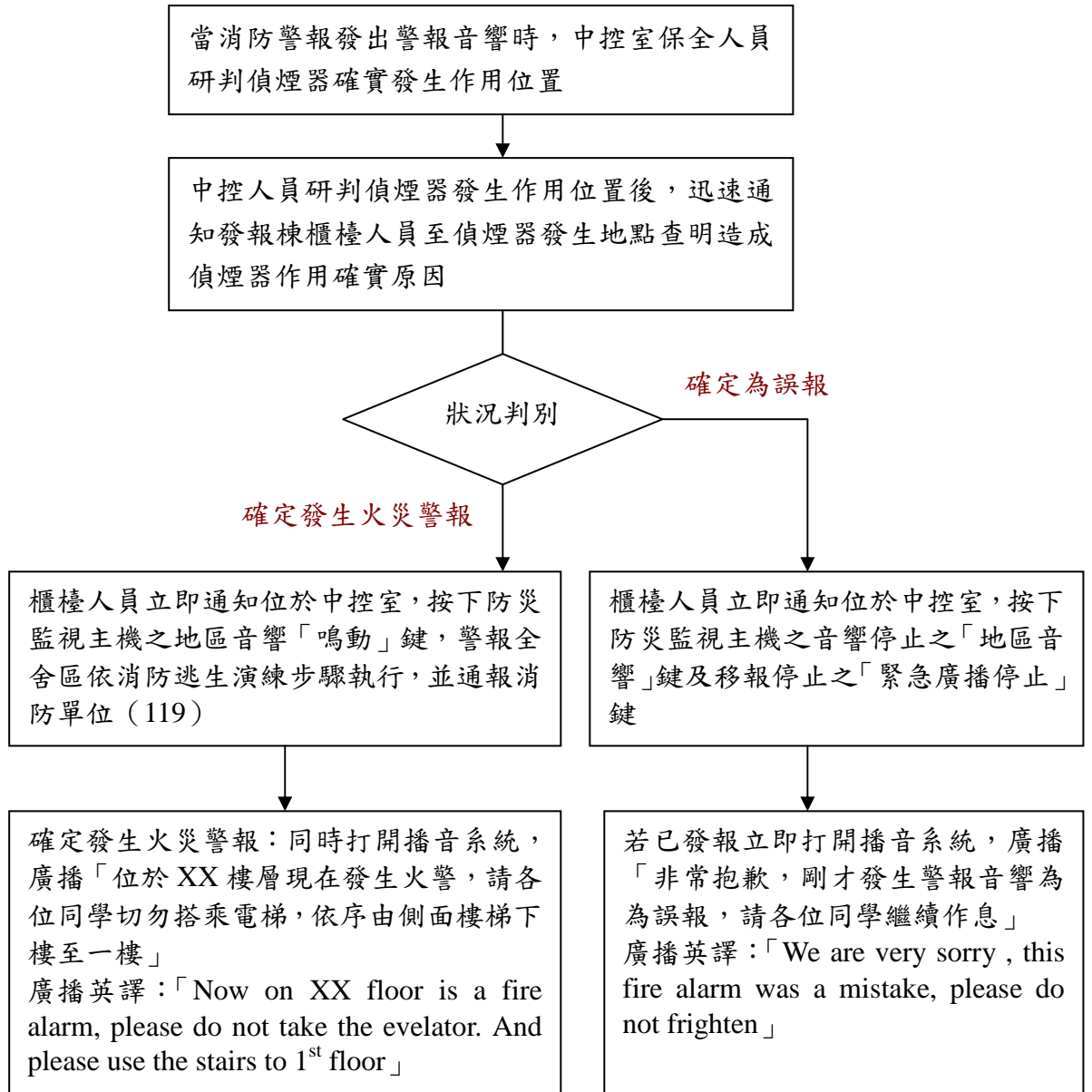


伍、宿舍電梯、水電、天然災害等異常事故處理

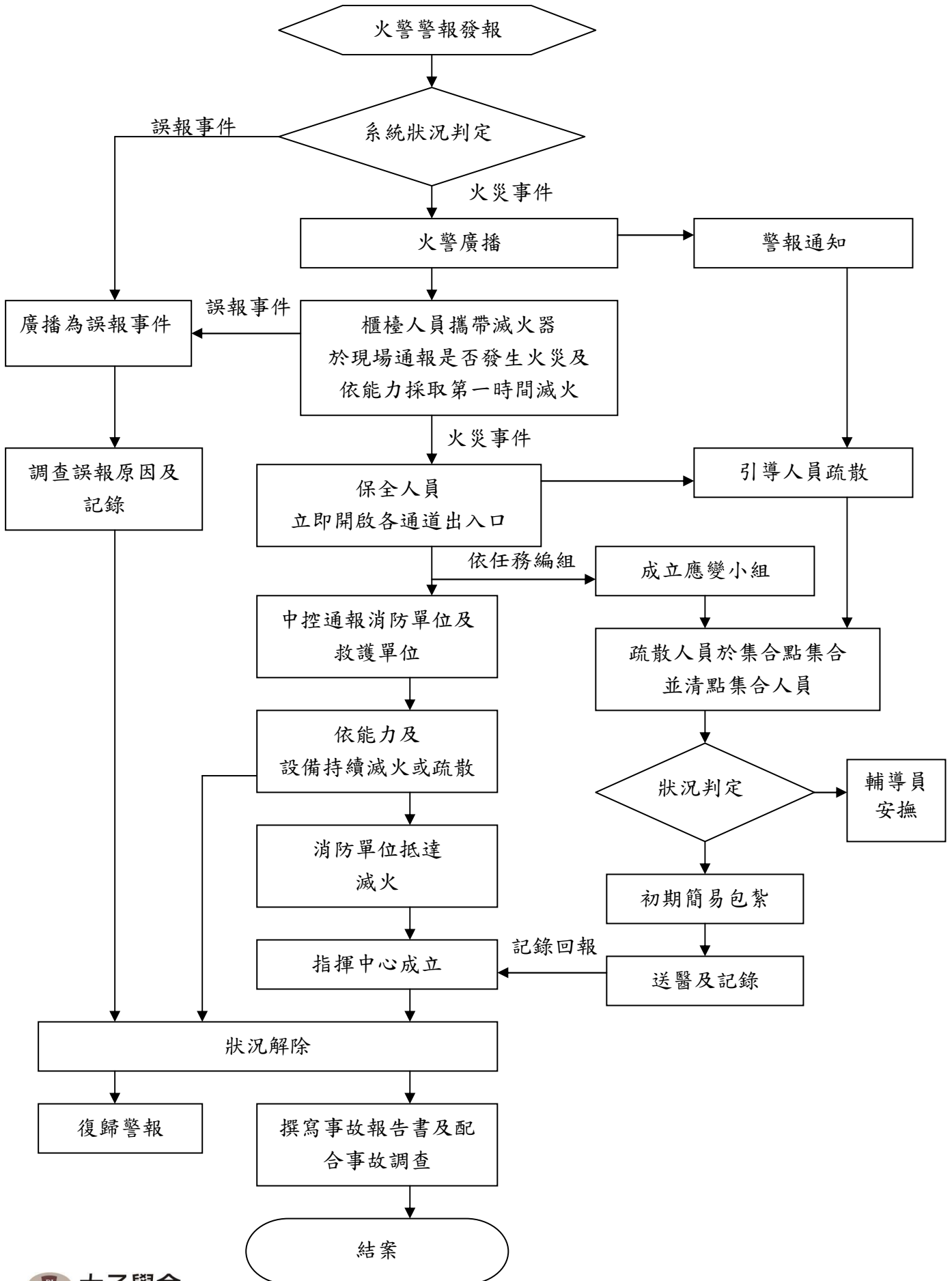


陸、火災警報之事件處理

消防警報器發報流程



消防警報發報後處理程序



柒、其他緊急應變事件處理

